



We Connect the World



Public Safety by Wireless Mesh Infrastructure



Public safety has never been more critical—or more difficult—than it is today. A strong public safety practice is founded on two core principles: constant vigilance and seamless communications. A failure on either front can be catastrophic. The world that these police, fire departments, first responders and other public safety organizations must protect is an increasingly mobile one, both in assets and people. And traditional networks simply can't keep up.

Public safety officials are also finding that relying on voice and data—the core capabilities of these traditional networks—isn't enough. Video is now the most important component of their surveillance and monitoring programs. And PheeNet is the only wireless technology built from the ground up with video in mind.

Video Surveillance

With video surveillance cameras becoming increasingly pervasive and with city-wide installation of IP-based cameras on lamp-posts, buildings, and patrol cars, police can use their PDAs or laptops to watch what's going on and manage an event clearly across town. Secure broadband access enables the transmission of databases, fingerprints, and photo images from anywhere in the community. Secure, high-speed capabilities are necessary to upload and download field reports and images that require fast data throughput.

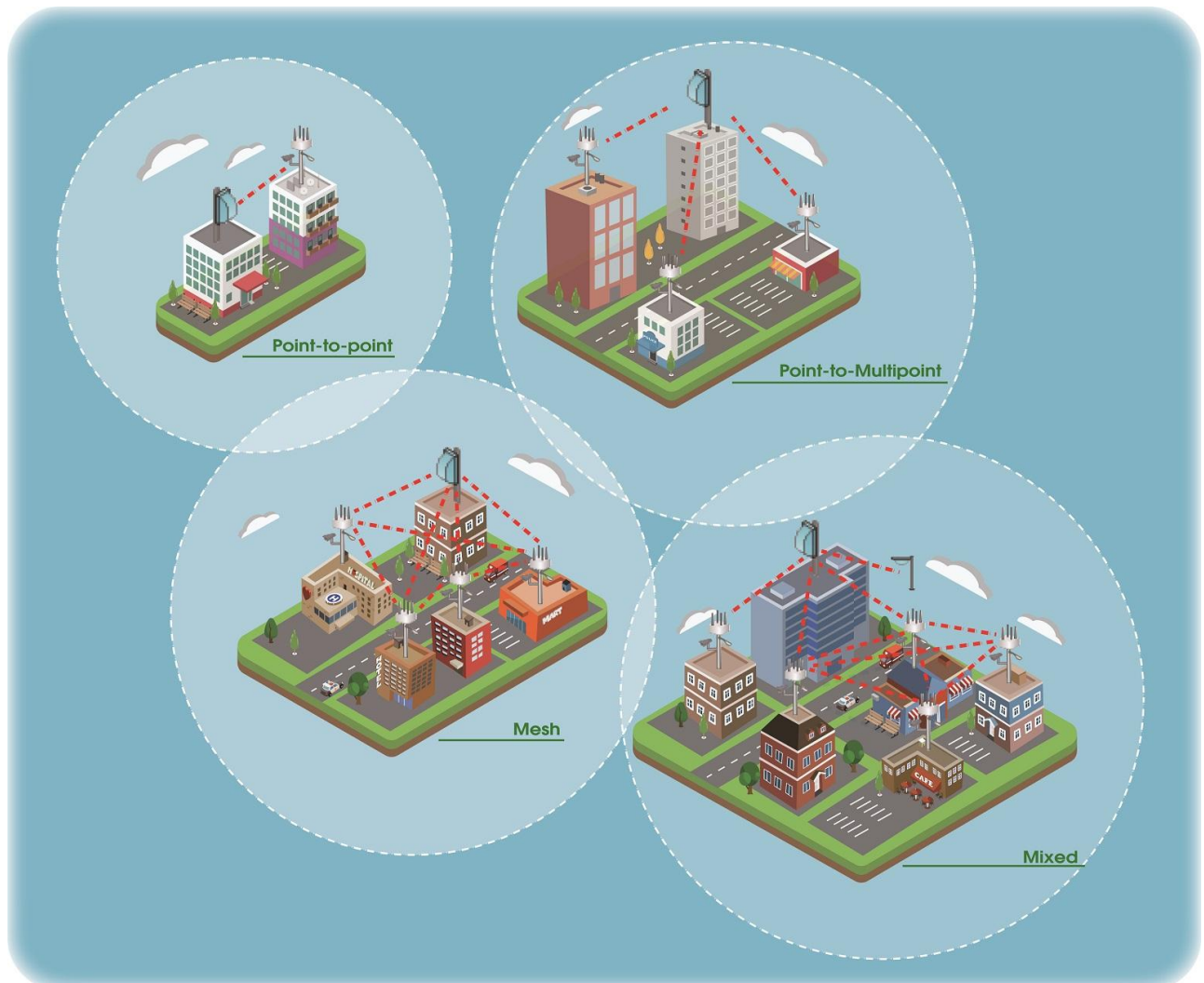
Mobility Solutions

Fire trucks in-route to a building on fire can request detailed information about fire hydrant water supply and gain access to additional structural building details. With PheeNet Wireless Mesh Mobility nodes deployed along streets and roadways, ambulances can be equipped as mobile networks and video cameras to provide two-way video image and voice communications between the ambulance and emergency medical centers.

➤ What's PheeNet Wireless Mesh advantage?

- 1) Maximum 3 Radio supported in a hardware
- 2) Keep high throughput 120Mbps till 20th hop to increase the Wireless Mesh Network Coverage and save the cost of internet
- 3) Pretty Low Latency (<1ms) in each hop
- 4) High speed mobility for vehicle
- 5) Comprehensive MeshView Pro NMS to do Mesh Network Central Management

➤ Solution





Unlike traditional networks that use WiFi access points to share a limited amount of bandwidth, PheeNet's Wireless Mesh networks form instantaneously and automatically, healing themselves when a link is interrupted or broken. So communications are immediate and constant. Compatible with any existing equipment, network or software, a PheeNet Wireless Mesh network can handle voice, data and video seamlessly, making it ideal for the demands of the Smart City industry.

And PheeNet's Wireless Mesh Mobility capabilities make it the networking technology of choice for Emergency Operations Centers as they attempt to respond and recover from disasters, including communications with command vehicles and ambulances as well as disaster recovery for voice, video and data.

PheeNet is the leader in expanding the benefits and capabilities of mesh networking to today's fast-moving trains, subways, buses and public safety vehicles. Operating at sustained speeds of up to 200km/h, our patented mesh and mobility technologies provide the only proven solutions capable of supporting high-definition video streams and seamless roaming across extended distances.

PheeNet Technology Corp.

Rm. 3, 20F, NO. 79, Hsin Tai Wu Rd., Sec. 1,
Hsi-Chih, Taipei, Taiwan
<http://www.pheenet.com>
TEL: 886-2-26982011 FAX: 886-2-26981421

